



Panel discussion: Conservation and sustainable use

Friedrich zur Heide
GIZ BioInnovation Africa

14 September 2023



Key Aspects of the BS4CSU Guidelines

Integrating the Conservation and Sustainable Use of Biodiversity in ABS Approaches in South Africa

Presentation to the African Biotrade Fair 14 September 2023
Neil Crouch

INTEGRATING THE CONSERVATION
AND SUSTAINABLE USE OF
BIODIVERSITY IN ACCESS AND
BENEFIT-SHARING APPROACHES
IN SOUTH AFRICA

GUIDELINES

FOR REGULATORS, USERS AND PROVIDERS

November, 2022



forestry, fisheries
& the environment
Department
Forestry, Fisheries and the Environment
REPUBLIC OF SOUTH AFRICA



BIO
INNOVATION
AFRICA



SANBI
Biodiversity for Life
South African National Biodiversity Institute

https://bio-economy.org.za/wp-content/uploads/2023/04/B_S4CSU-Guideline-Document.Web_.pdf

Prepared for the DFFE by the DSI/NRF
Bio-economy Chair at UCT,
Prof. Rachel Wynberg and Team



Aims of the Guidelines

- To strengthen benefit sharing for the conservation and sustainable use of biodiversity in ABS agreements and other measures
- To support actors involved in the biodiversity economy to strengthen biodiversity conservation and sustainable use
- To enhance understanding of the potential of ABS-related activities to promote biodiversity conservation and sustainable use while addressing national, provincial and local environmental, social and economic priorities

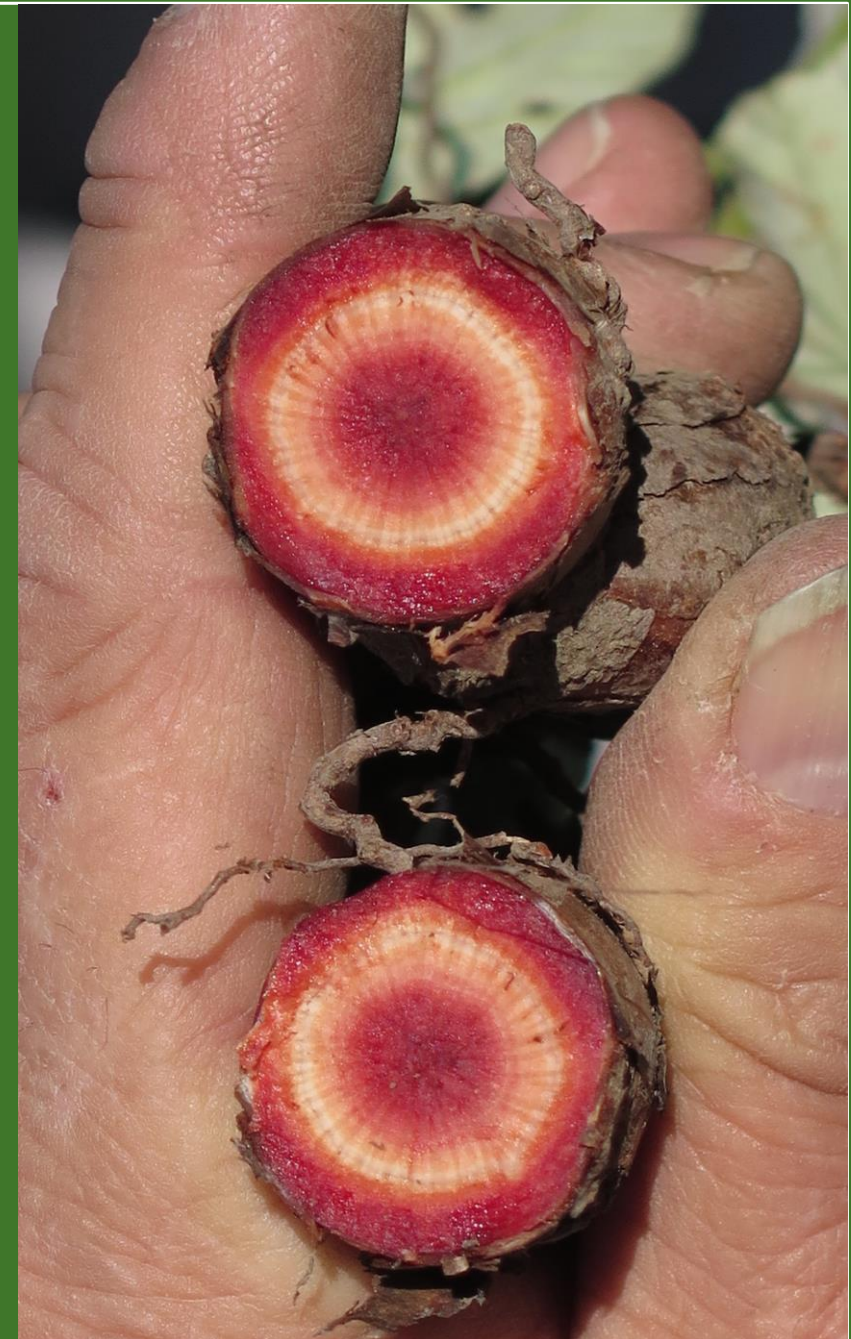
SOUTH AFRICAN CONTEXT

SA at forefront of ABS regulation and also has strong conservation history.

Conservation and ABS linked in NEMBA and specified as possible benefit in BABS but has had limited impacts on conservation. Most **benefit-sharing agreements** in SA do not incorporate benefits for the conservation and sustainable use of biodiversity

A focus on equity and regulatory compliance often turns attention away from conservation and sustainable use

National and provincial conservation priorities have not featured strongly



Aimed at regulators, users and providers

Voluntary, practical, and accessible

Principle-based: participation, transparency, transformation

Holistic approach to CSU: landscape and ecosystem levels

Includes microorganisms, cultivated and wild harvested species, marine and terrestrial ecosystems

Case studies draw on a variety of biomes and species

Implementation of CSU: straightforward, easy, and effective

CSU is viewed as a shared responsibility

SMART Benefits

(monetary or non-monetary)

S Specific
M Measurable
A Achievable
R Realistic
T Time-bound



PART A

Introduction



Mechanisms



Guidelines



Implementation

PART B

Laws, policies, strategies



National CSU initiatives



Glossary of terms



Appendices