

Digging Deeper Event

Community Engagement Pilot | Honeybush Sector

August 2023



forestry, fisheries
& the environment
Department
Forestry, Fisheries and the Environment
REPUBLIC OF SOUTH AFRICA



Quiet Insight LLC were commissioned by the project ABioSA to facilitate an alternative community engagement approach. This booklet is part of the co-creation process of this pilot project. ABioSA is funded by the Swiss State Secretariat for Economic Affairs (SECO), integrated in the governance structure of the ABS Initiative, and implemented by the Deutsche Gesellschaft für Internationale Zusammenarbeit (GIZ) GmbH. Although every effort has been made to provide complete and accurate information, GIZ, SECO and QI make no representations or warranties, express or implied, as to its accuracy at the time of use.

Community Engagement

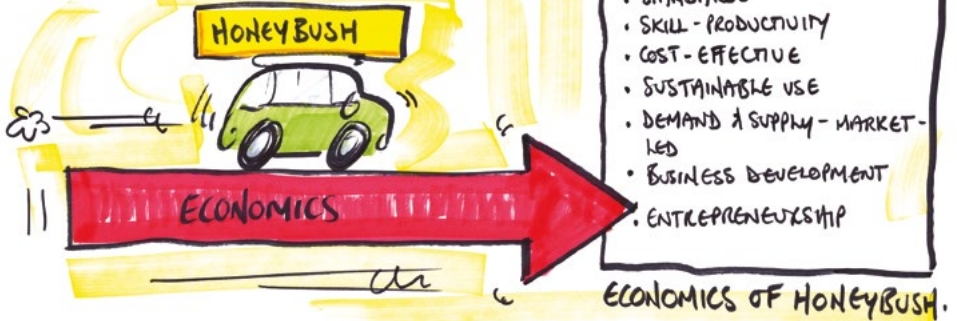
Through the Community Engagement Pilot Project, a diverse group of people gathered on three separate occasions to share perspectives on the current challenges and opportunities within the Honeybush Sector.

The following images and texts were derived from the third gathering from 7–8 August referred to as “Digging Deeper” in a process called the Quiet Insight Approach®.

Thank you to all the pilot participants who contributed:

- Traditional Knowledge Holders
- Community Leaders and members of their Community
- Wild Harvesters
- Cultivators
- Processors
- Research
- Provincial and National Government
- NGOs

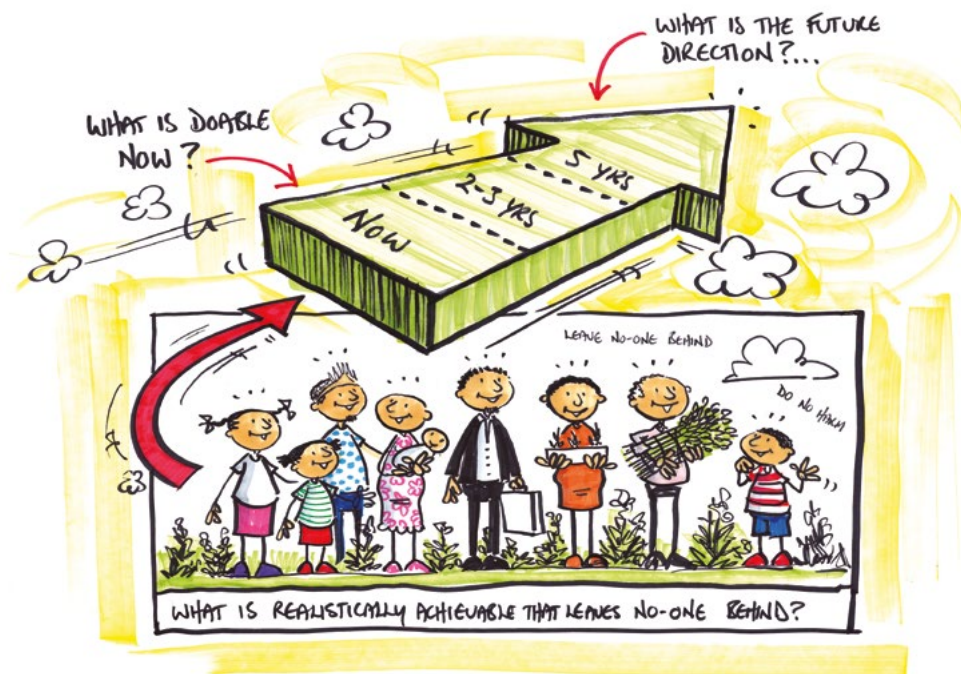
ECONOMICS IS THE CORRIDOR,
HONEYBUSH IS THE VEHICLE



What is realistically achievable that does no harm and leaves no-one behind?

Pilot participants said it is important to move forward and take action that supports Sector growth.

Progress can still be made while stakeholders work at addressing important historic and complex issues that impact local communities.



Digging Deeper Themes

The nine themes presented here were shared by the participants at Digging Deeper and identified by them as what was most important.

These are the areas that they themselves will take into action and this booklet provides the reminder of what was said.

1. Wild Harvesting
2. Processing
3. Education Needs
4. Training Needs
5. Governance
6. Growth through Compliance
7. Creating the Market
8. Networks and Communities
9. Transformative Stories



How do we
navigate
change?...



Who is
community



Wild Harvesting

The Wild Harvesting group focused on these practical and doable steps that can happen immediately:

- Report illegal harvesting with specific details
- Develop an understanding of who exactly is doing wild harvesting
- Identify areas for Honeybush nurseries, for example the Khoisan Village
- Quantify and report destroyed plantations.



Processing

The processing group focused on realities associated with establishing and managing a processing factory.

Shorter Term Realities

- It is extremely costly to develop a processing plant. There are better alternatives for first steps.
- It is very realistic to start with artisanal products such as tea, creams, soaps and domestic seedlings to sell locally.

Longer Term Realities

- It is critical to develop a standardised processing system and equipment.
- Both artisanal and/or standard processing will require training and education support.
- Take advantage of the fact that Tsitsikamma is a tourist destination and think of ways to sell and promote Honeybush to the visitors.



Education Needs

The education group got down to basics on what needs to happen first:

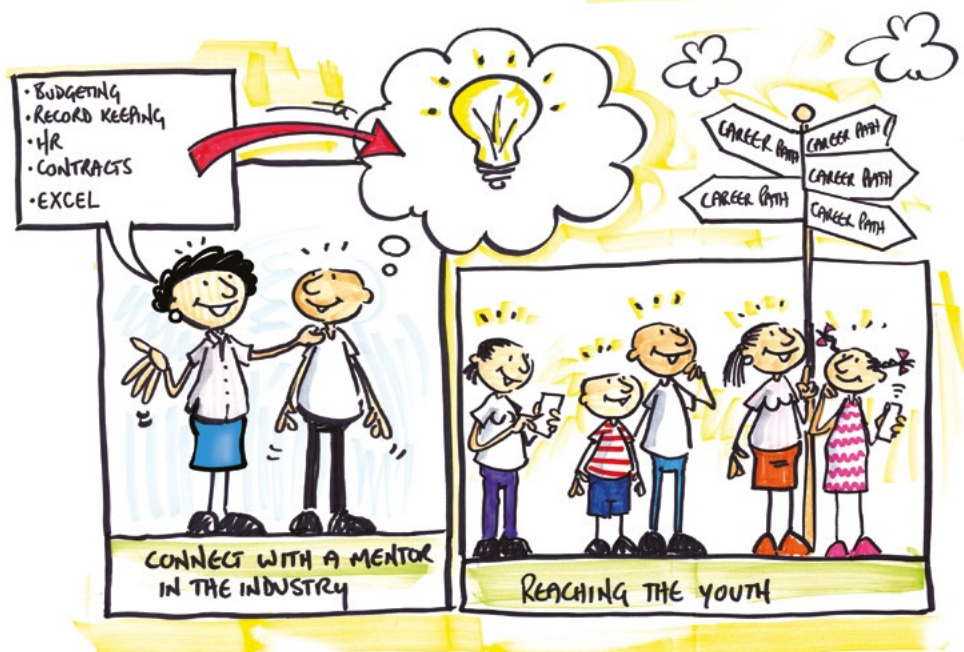
- Systematically identify training needs in the community that support the Honeybush Sector
- From a Wild Harvesting and Cultivation perspective there was an immediate need expressed to learn more about the Honeybush Plant
- There is a need to locate funding sources and make applications (i.e., AgriSETA)
- There is a need to help people understand the legislative policies that are affecting them in simpler terms



Training Needs

The training group broadened the vision of what training could and needs to involve:

- It is important to show the youth that there are a wide variety of skills necessary in this field (i.e., bookkeeping, digital marketing, legal contracts etc.)
- Identify people willing to be mentors to youth who want to enter this Sector
- Establish an industry mentoring network

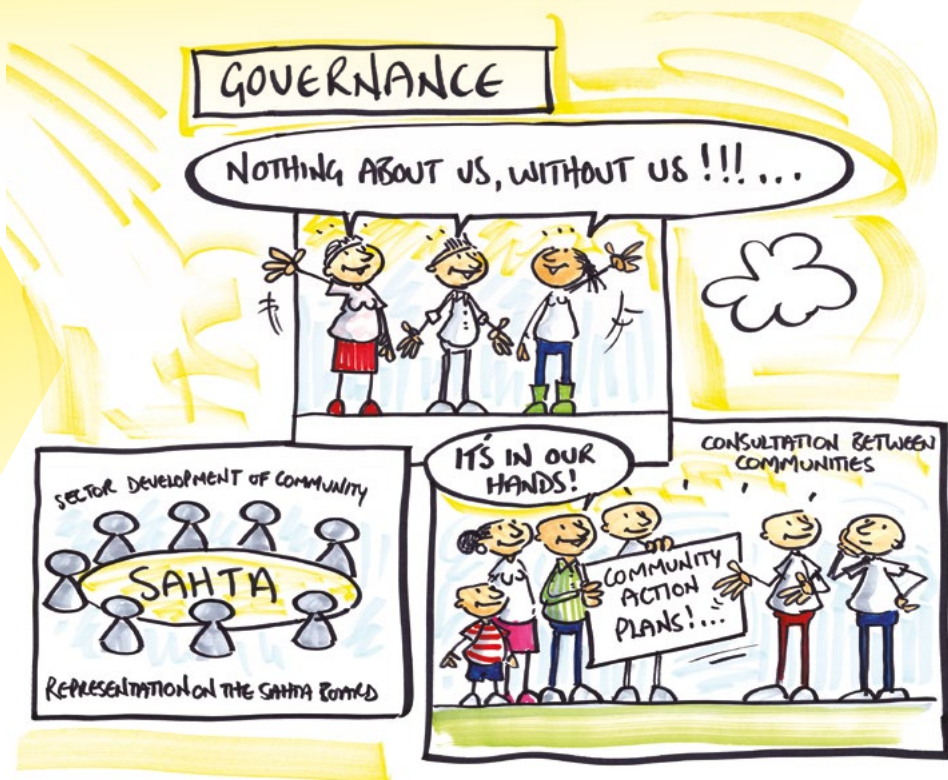


Governance

The theme of the governance group was representation and the necessity of feedback.

Relative to representation, attention needs to be given to assessing ways in which communities are truly represented. This can only be done through ongoing community involvement and networking between local communities.

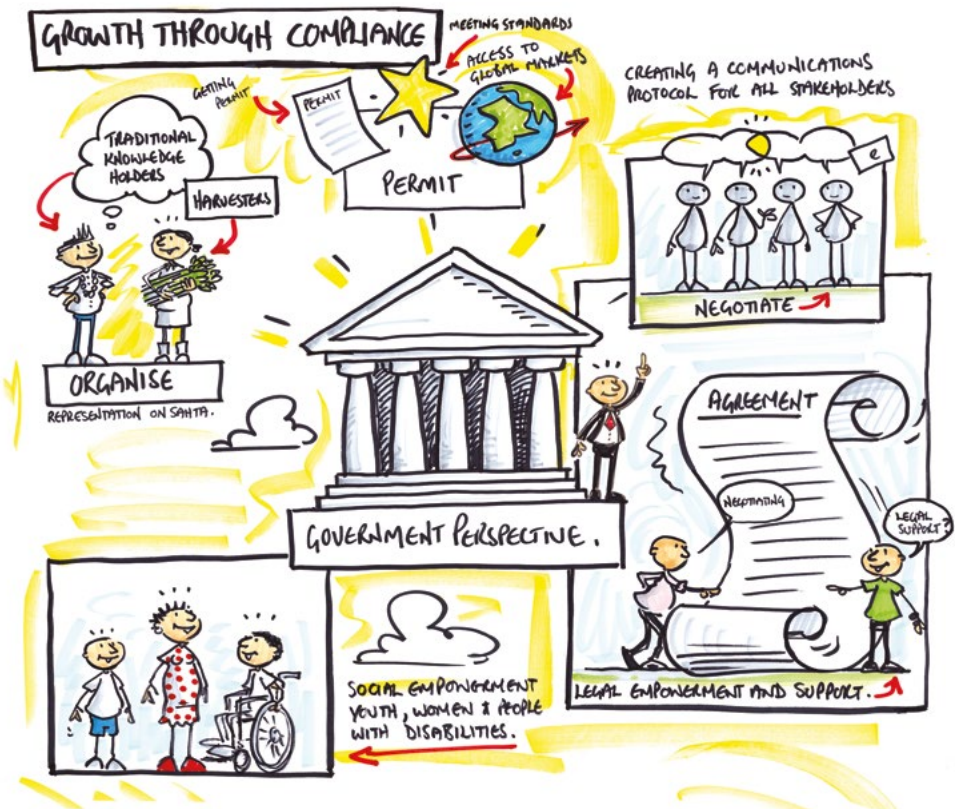
Specifically, to SAHTA, the representation of Community Leaders and Indigenous People should be resourced with a focus on transferring relevant cultural traditions, transfer of knowledge & skills and development of capability.



Growth through Compliance

The overall theme of this group was about the necessity of creating better communication channels throughout the Sector. Ideas include:

- Organizing Traditional Knowledge Holders and Harvesters as a Group affiliated to a Sector Body (i.e., SAHTA) so that they can be in a stronger position as intermediaries to the larger Honeybush community.
- Fundraising for legal empowerment and support for communities as they negotiate complex agreements.



Creating the Market

This group emphasised the urgency to get a Geographical Indicator (G.I.) for Honeybush. That is, a way to establish and promote that Honeybush is an indigenous plant that only grows here. If this is not done, we could be missing out on an important opportunity.

While recognising that an international market is vital, it should not be overlooked that there are near term benefits for growing the local market.



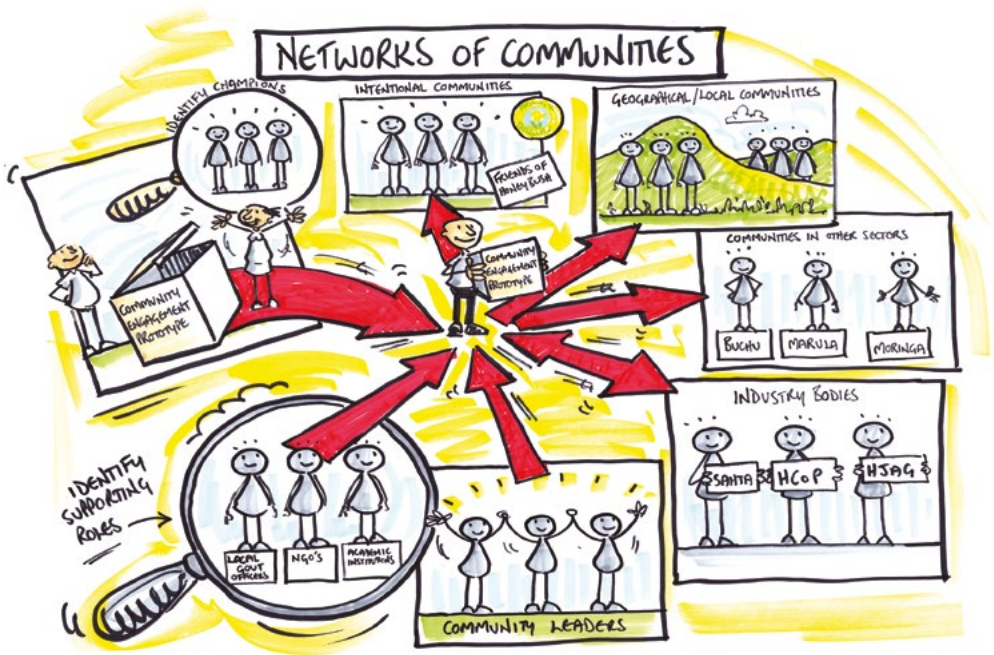
Networks and Communities

The networks and communities group began with a question, “Who are the communities?”

The need was stated to identify participating communities and understand their specific needs that are critical to develop the Honeybush Sector.

Within the context of the Community Engagement Pilot, it was suggested that among the pilot participants champions should be identified and trained on how to communicate and work with the prototype in their respective communities.

It was emphasised that the strength of networks is dependent on community leaders uniting for a common goal.



Transformative Stories

Just as Honeybush is unique to South Africa, so too is the significant human story of the San and Khoekhoe cultures. It is important to recognise this unique opportunity in time to preserve both.

This is supported by learning how to document and record stories in association with Research and other enabling institutions or individuals. This also applies to the traditional medicinal uses of Honeybush that can be transferred between generations.

The time is now to record and preserve the family and community stories lest they be lost forever.







Event 1: Community Events





Event 3: Digging Deeper



